



*Where the little things  
mean everything.™*

DOUBLETREE BY HILTON

MINSK

OPENING Q4 2016

# DoubleTree by Hilton Facts



429

PROPERTIES

100,000+

GUESTROOMS

356

HOTELS

36

SUITES

19

RESORTS

4

CLUBS

36

COUNTRIES

Australia | Bulgaria | Canada | China | Costa Rica | Croatia | Greece | India  
Ireland | Indonesia | Italy | Japan | Jordan | Luxembourg | Malaysia | Mexico | Netherlands  
Panama | Peru | Poland | Portugal | Romania | Russia | Saudi Arabia | Seychelles  
Slovakia | South Africa | Spain | Tanzania | Thailand | Turkey | UAE | UK | USA

## Countries coming in 2016

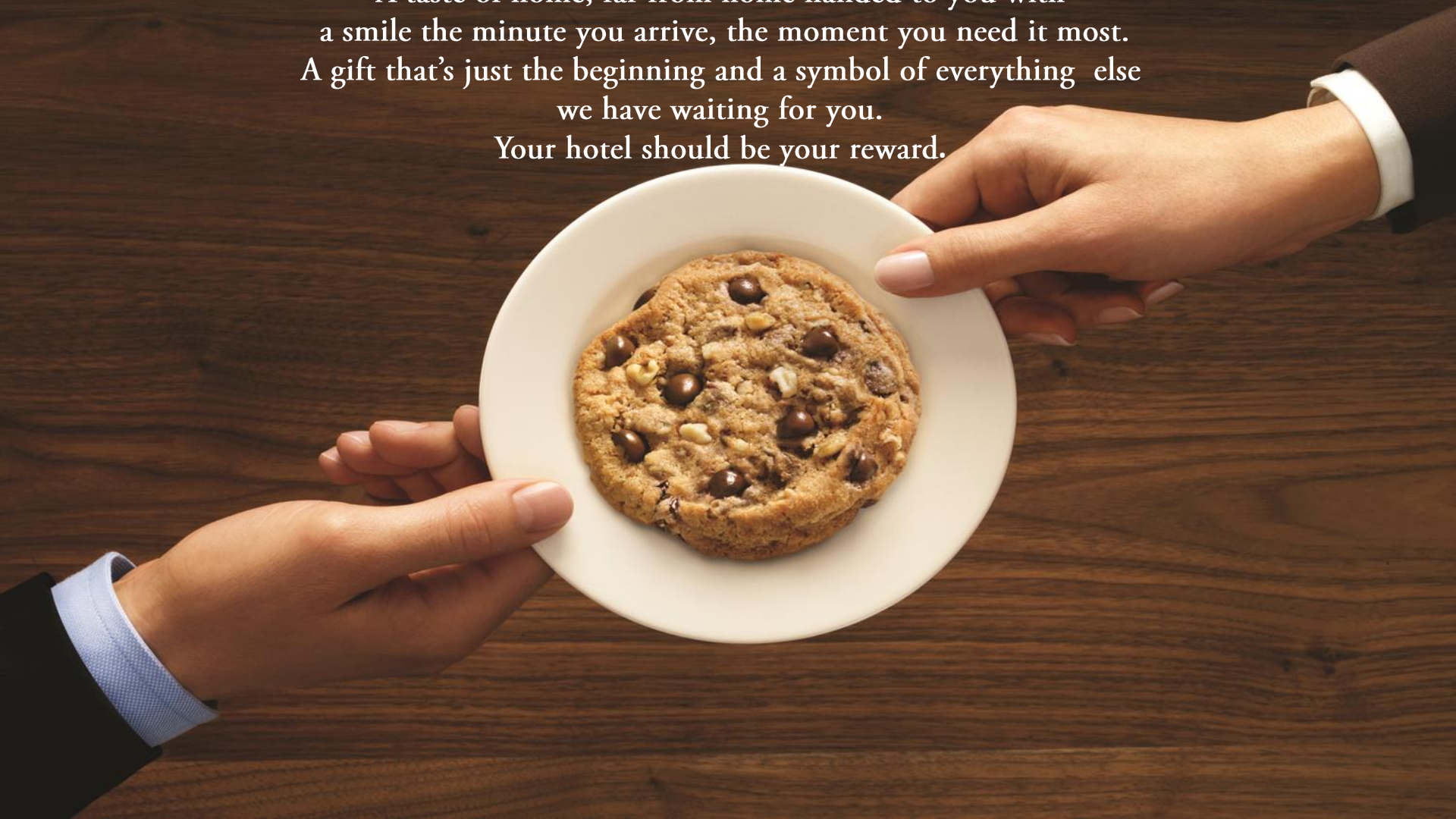
Chile | Armenia | Belarus



# DoubleTree by Hilton Brand



*At DoubleTree by Hilton it all starts with a cookie.  
But not just any cookie. A gratifying, comforting, chocolate chip cookie.  
A taste of home, far from home handed to you with  
a smile the minute you arrive, the moment you need it most.  
A gift that's just the beginning and a symbol of everything else  
we have waiting for you.  
Your hotel should be your reward.*



# Minsk, Belarus



## Europe



# Destination: Minsk



*“Minsk is a mind-blowing experience, you can feel the palpable pride of a city that has reinvented itself several times in its almost millennium of existence, and each time triumphantly.” LONELY PLANET*

- The capital of Belarus and CIS (Commonwealth of Independent States)
- Founded in 1067, destroyed and re-built after 2<sup>nd</sup> World War
- Population over 2 million people; an amazingly clean and safe city
- A cozy Old town and historical Trinity suburb, several Catholic and Orthodox churches
- Impressive sport venues for ice hockey (e.g. Minsk Arena 15 000 seats), cycling, tennis, biathlon etc.
- Iconic modern architecture, incl. “Diamond” National Library and Stalin’ Ampire avenues
- More than 10 parks, Botanic garden, Aqua park, Zoo
- Over 20 museums, theatres and music halls; Opera & Ballet, Circus; over 10 Casinos

The view from our Hotel (Trinity Suburb):



# Places to Visit



Sport Palace (Svisloch river' bank)



National Big Opera & Ballet Theatre



The "Diamond" National Library



St.. Spirit Orthodox Cathedral



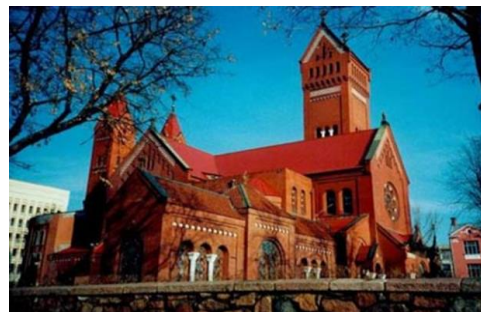
Victory Square



Minsk Ice hockey Arena



Government block (Independence square)



St. Alena and Simon Catholic Church



Gorky Children' Park

# Direct flights to Minsk



## 22 Domestic routes (CIS)

Almaty, Astana, Ashgabat, Baku, Batumi, Gomel, Yekaterinburg, Erevan, Kaliningrad, Karaganda, Kiev, Kustanai, Krasnodar, Kutaisi, Moscow, Pavlodar, Samara, St.-Petersburg, Sochi, Tashkent, Tbilisi

## 28 International routes

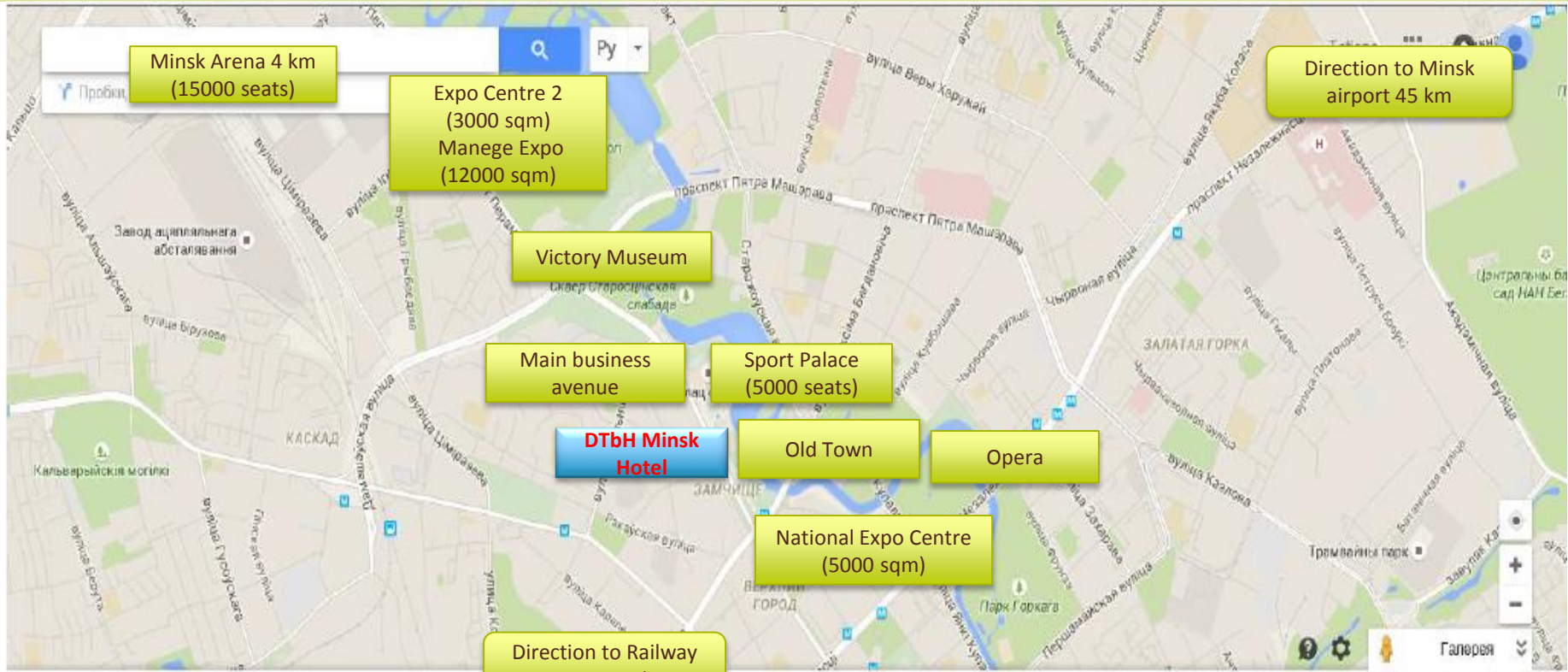
Abu-Dhabi, Amsterdam, Barcelona, Beirut, Belgrade, Berlin, Budapest, Warsaw, Vienna, Vilnius, Hannover, Geneva, Larnaca, London, Manchester, Milan, Nice, Paris, Peking, Prague, Riga, Rome, Istanbul, Stockholm, Tehran, Tel-Aviv, Frankfurt, Helsinki



A STAR ALLIANCE MEMBER



# Hotel location / Map of sites



- In the city centre of Minsk
- 45 km to the Minsk International Airport
- 3,5 km to the Railway station

- 0.5 km to the Old Town
- 1.3 km to the National Expo Centre
- 0.5 km to the Metro station

# *DoubleTree by Hilton Minsk*



# Hotel Overview



## 193 ROOMS

- 175 Guest rooms (27-39 sqm)
- 127 King Room / 46 Twins / 2 Accessible
- 15 Junior Suites (68 sqm)
- 2 Kings Suites (109 sqm)
- 1 Presidential Suite (168 sqm)

## FOOD & BEVERAGE

- **Beans & Leaves** Lobby Café  
(49 covers inside, 80 covers outside)
- **Ember**  
(Restaurant 84 covers, Bar 58 covers)
- **BarDot21** Sky Lounge Restaurant  
(127 covers)

## MEETING AREAS

- Ballroom (543 sqm / 300+ delegates)
- 3 Function Rooms (60 delegates)
- Fully Equipped Gym (24h)
- Parking Lot (1000)



# Hotel Lobby



# Guest Room



# *Junior Suite*



# Presidential Suite



# Guest Amenities & Services



- Full climate control
- Free Wi-Fi
- Flat screen TV
- Tea & Coffee set
- Blackout curtains
- The Sweet Dreams™ by DoubleTree Sleep Experience
- Safe
- Mini Bar
- Ironing tools
- Hair dryer
- Bath robe and slippers
- Cosmetics set
- The Wake Up DoubleTree Breakfast™
- 24h Reception
- 24h Room service
- Concierge
- Laundry
- Parking lot



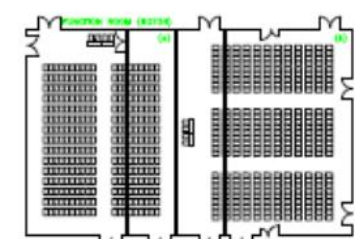
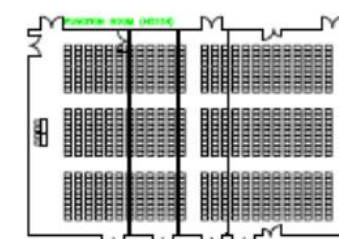
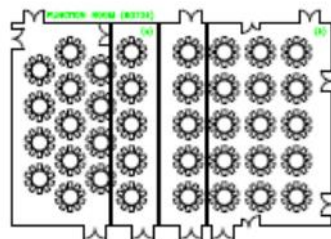
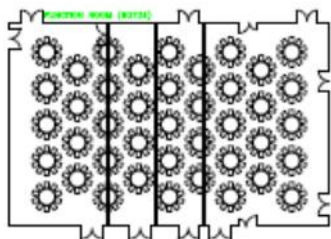
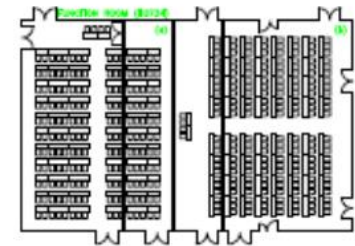
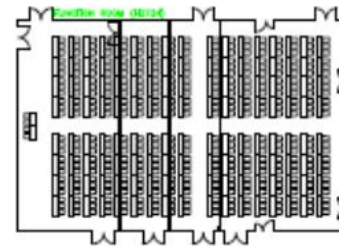
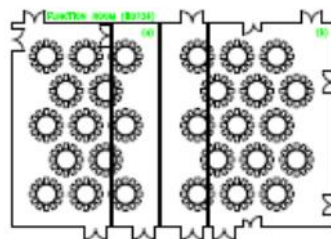
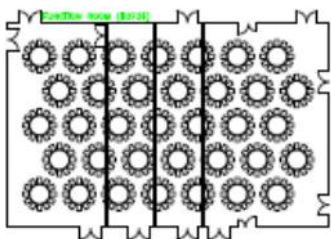
# Ballroom



# Meeting Room Capacities / Ballroom



Meeting Room	Banquet (8's)	Boardroom	Theatre	Classroom	Cabaret
Ballroom 1, 2 & 3	280		300+	270	300
Ballroom 1	80	48	100	90	100
Ballroom 2	104	48	100	90	100
Ballroom 3	96	52	100	90	100
Ballroom 2 & 3	200		200	180	200



❖ **Ballroom - 543 sq m - 29.2m x 18.6m x 5.4m / maximum capacity 300 delegates**

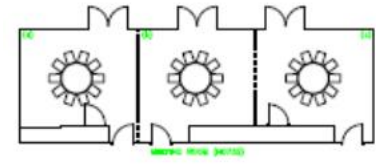
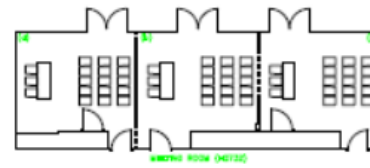
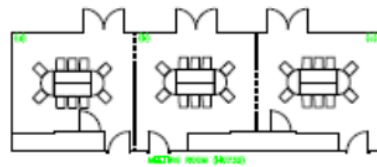
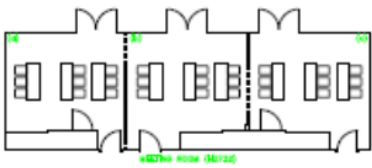
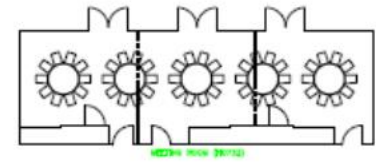
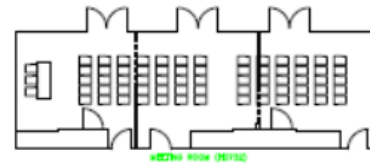
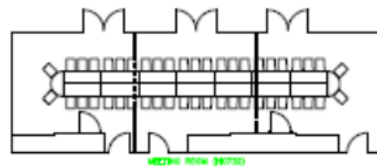
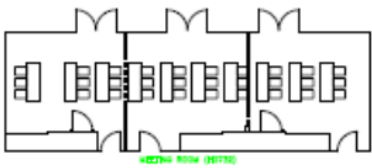
# *Function Area Reception*



# Meeting Room Capacities / Function areas

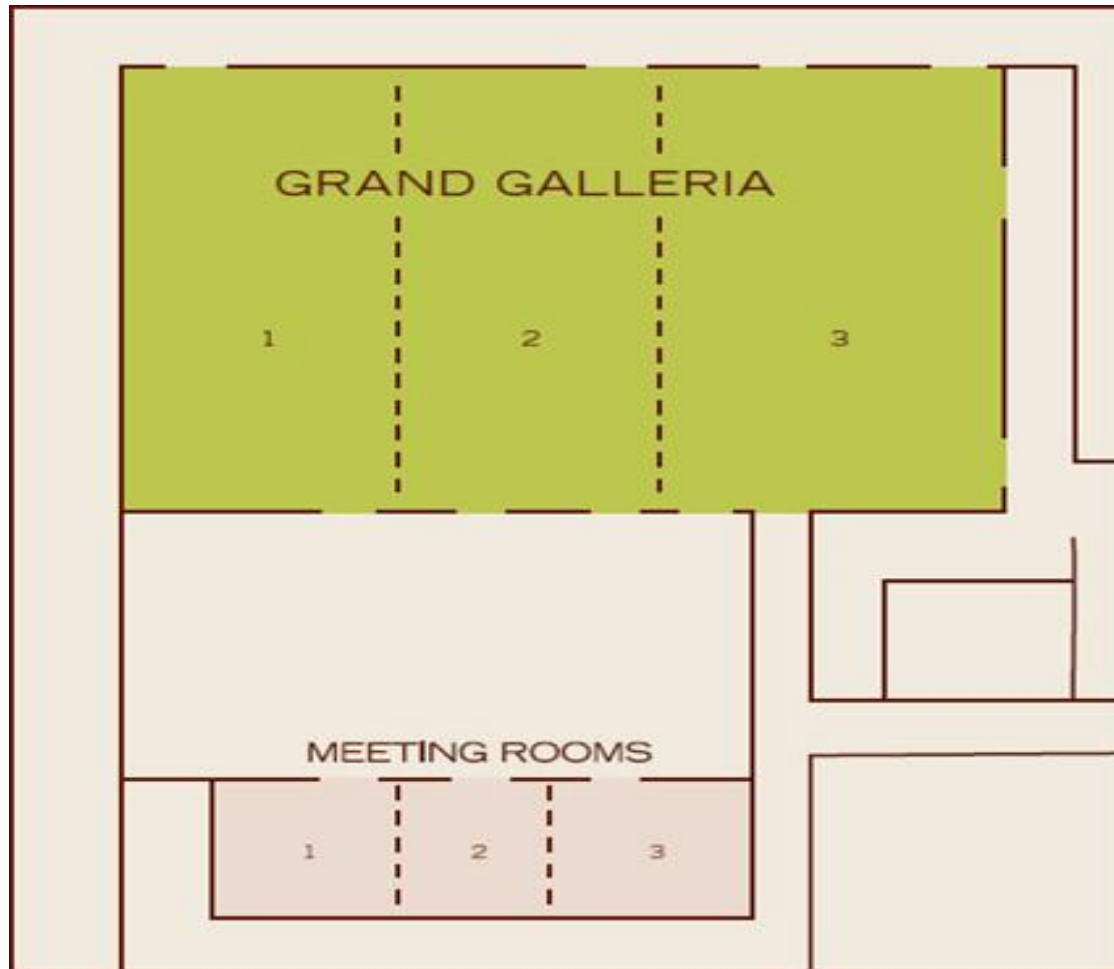


Meeting Room	Boardroom	Theatre	Classroom
Meeting Room 1, 2 & 3	48	57	40
Meeting Room 1	16	17	12
Meeting Room 2	16	17	12
Meeting Room 3	16	17	12
Meeting Room 2 & 3	32	37	40



❖ **3 Meeting Rooms – 17.5m x 5.7m x 3.6m / maximum capacity 60 delegates**

# Meeting facilities scheme



# Food & Beverage Outlets



- **Ember – All day dining restaurant** ( 7<sup>TH</sup> floor) offers contemporary, innovative dishes with a warm and authentic experience for breakfast, lunch and dinner.
- **The Ember Bar** will serve best international cocktails and a short menu at bite sizes.
- **Lobby Café Beans & Leaves** (1<sup>st</sup> floor) is the inviting coffee & tea shop open from morning until late, to eat in or grab & go.
- **BarDot 21 Sky Lounge** (21th floor) Elegant and modern, with panoramic views over the river and city, will be the most exciting destination bar in Minsk.
- Operating from lunch until late.



# *All Dining Restaurant - Ember*



# *Adjacent Bar at Ember*



# Ember Restaurant and Bar



With the heart of a home centered around the kitchen, the anchor of the restaurant will be the visually imposing stone hearth ovens.

The menu will celebrate fire, heat and big flavours, focusing on European and Belarusian ingredients.

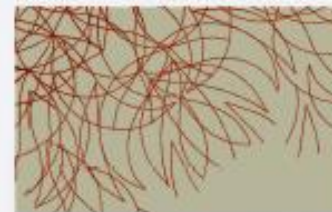
The terrace is a part of the dining room.

Subtle nod to art deco, with accessories and service ware.

Innovative wine display will be an essential part of design.



EMBER RESTAURANT & BAR



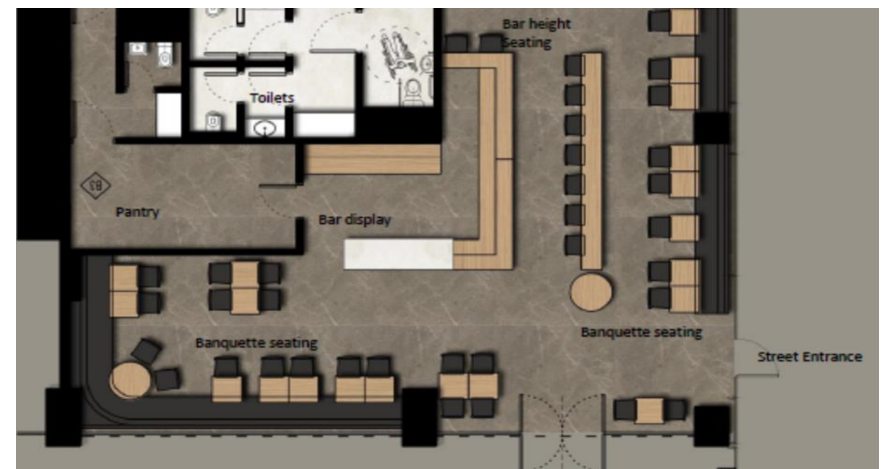


Beans & Leaves is the inviting coffee shop on the ground floor of the hotel.

Open from morning until late evening, Beans & Leaves presents guests with a comfortable lounge environment and a range of artisan coffees and teas, as well as pastries, panini and snacks, to eat in or grab and go. Meeting the demand on quick service and democratic prices, and the market niche and local preference for soups. The menu will be focused on the soups as 'grab & go' or eat-in'.

Beans & Leaves offers excellent quality and service, with the cosmopolitan feel of an upscale and urban café. It will become the key social space of the hotel and ideal for a wake-up cappuccino, a quick snack or socializing.

The operation is aimed to serve both passing trade and hotel guests looking for speed and convenience.



# *BarDot 21 Sky Lounge*



# BarDot 21 Sky Lounge Restaurant



Elegant and modern, located on the 21st floor, with panoramic views over the river and city, BarDot 21 will be the most exciting destination bar in Minsk.

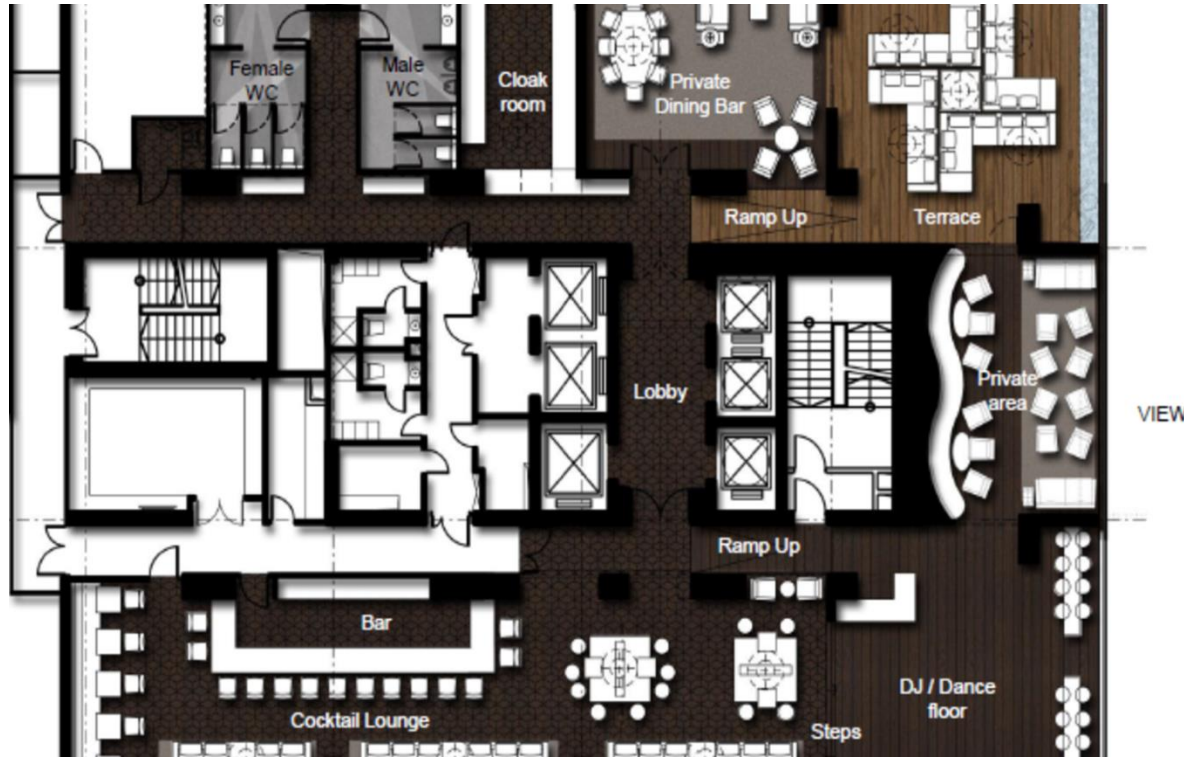
Branded Moët & Chandon, it serves the best cocktails in Minsk, and has the widest range of international wines, champagnes and spirits.

Eating at Dot21 is a small culinary journey into South East Asian dining experience.

Chef Gerald values the strong flavors of traditional Thai and Singaporean cuisine, to deliver surprising tastes and textures in dishes of all varieties, whatever savoury or sweet, meat, seafood or vegetable. Melding them together to create a sophisticated, subtle elegance in which every element is in perfect balance. Operating from 6 pm till late.



# BarDot 21 & Moët Chandon



# Multifunctional Complex “Gallerea Minsk”



- The biggest shopping center in Belarus: (54 500 sqm)
- Fashion gallery (38 000 sqm)
- Supermarket (4 500 sqm)
- Food court with several cafes & restaurants
- Entertainment areas
- Parking lot (1 000 cars)
- The biggest promotion screen in Belarus (330 sqm)





## Property' specific:

- Central location close to business & expo venues and attractions
- Big parking facility
- To stay Connected (free Internet)
- 3 F&B outlets, incl. SkyBar with spectacular view
- Coffee makers in the rooms
- Free water, tea&coffee facilities
- No loud casino in house
- Smoking floors

## Brand' specific:

- Ease & Accessibility of Booking Channels
- Brand Recognition and Comfort
- Safety & Security
- Ease of working in room (ergonomic table & chair)
- Room service 24h
- Sleeping experience
- Ironing facilities & cosmetic set
- Hhonzors rewards



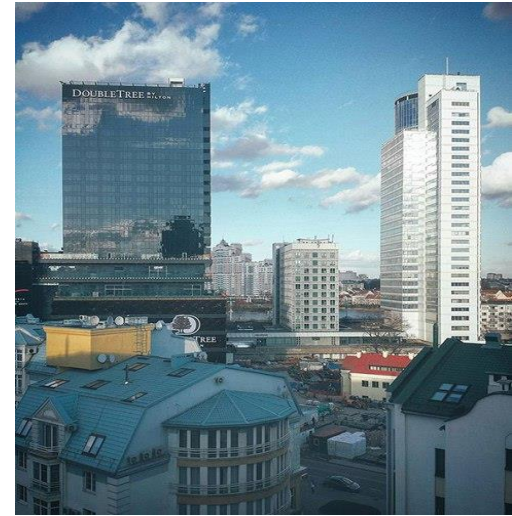
## Property' specific:

- Central location close to attractions & shopping
- Flexibility of Meeting Facilities
- Twin beds (46)
- Free Internet
- Big parking facility
- Transportation proximity
- 3 F&B outlets, incl. SkyBar with spectacular view
- The view
- Free water, tea & coffee facilities
- No loud casino in house

## Brand' specific:

- Ease & Accessibility of Booking Channels
- Variety and Quality of F&B Options for Meetings
- Quick and Efficient Sales process
- Hassle free & Prompt Banquet Service
- Brand Recognition and Comfort
- Safety & Security
- Hhonor rewards

# How Dreams Come True





## **Pre-Opening Address**

17 Revolutsionnaya str., 3<sup>rd</sup> floor

Minsk, Belarus , 220030

phone.:(+375) 17 327 78 83

fax: (+375) 17 327 74 03

## **Property Address**

9 Pobediteley Avenue

Minsk, Belarus, 220004

## **Emails**

General info: [doubletreeminsk.info@hilton.com](mailto:doubletreeminsk.info@hilton.com)

Director of Sales: [tatiana.belousova@hilton.com](mailto:tatiana.belousova@hilton.com)

## **Website**

[minsk.doubletree.com](http://minsk.doubletree.com)



*Thank You!*

